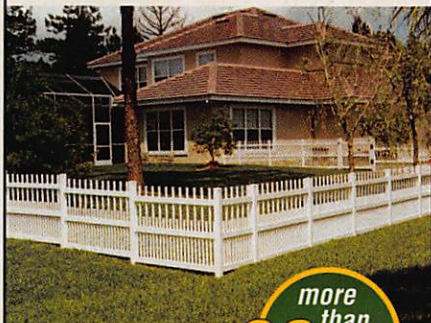


# COUNTRY ESTATE FENCE



more than **30** styles

How many ways can you improve the appearance of your home with Country Estate Fence?

With a little imagination, the list is endless.

Country Estate polyvinyl fence makes trees and flowers look their best. It can protect or add privacy . . . or lets the evening breezes flow through. Your Country Estate professional will help turn dreams into reality.

Invest a moment of your time and call toll-free to receive your free copy of Country Estate Fence



Facts . . . a colorful catalog with all of the styles and answers to your fencing questions. Country Estate Fence is available in white, almond, light gray or light brown – one is sure to be a perfect fit for your place. Let us use our 53 years of experience to assure your satisfaction.

View us on the web at [www.countryestate.com](http://www.countryestate.com)

Nebraska Plastics, Inc. • PO Box 45  
Cozad, NE 69130-0045 • FAX 308-784-3216

For colorful literature and your nearest Country Estate Dealer, call

**1-800-445-2887**



Traditional white fence . . . without the traditional maintenance.



Editor's Note

## New Year, New Challenges

I want to introduce you to the newest addition to my family. Maya is a chocolate Labrador retriever who, aside from being absolutely adorable, is smart and talented as well. (And I'm

not the least bit biased!) At this writing she is learning to fetch the newspaper (and *not* the neighbors' papers). Working with her takes patience but it's so rewarding. I can deal with teeth marks on the front page just to see her little tail wagging with excitement.

This year, why not resolve to learn a new craft? It will take work, but practice and determination are more than half the battle.

As for Maya, she's constantly honing her skills. The Sunday paper may be too big for her to fetch now but she'll grow into the challenge. So try something new this year — just don't bite off more than you can chew!

Send your letters to: *Crafts Edition*, 700 W. 47th St., Ste. 810, Kansas City, MO 64112.

— Jessie Eisenstein

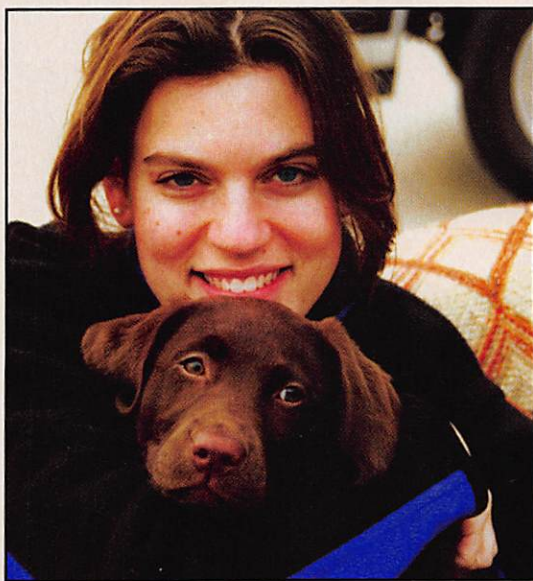


PHOTO: JEFF MCCARRAGHER

### Pattern Correction

#### PURPLE CROSS QUILT

(Sept.-Oct. 1997; Vol. 41, No. 5; p. 26)

For a 77- x 99-inch quilt, you will need 36-inch-wide fabric in the following amounts and colors: 5 yards of lavender, 5 yards of white (ours is patterned) and 10 yards of yellow.

We apologize for overstating the

amounts of fabric. While our original calculations work out mathematically, they do not take into account the strategic placement of templates in order to get the most pieces out of your fabric.

If you have already purchased the fabric, we suggest using lavender for the quilt back.

### FROM THE PUBLISHER

In every issue of our *Crafts Edition*, we do our best to provide you with a variety of needlework activities to include knitting, crocheting, embroidery, sewing, quilting and more, projects that we hope you'll enjoy completing and using.

You, our reader and subscriber, have played an important part in our accomplishments, and we want to do more.

During the new year, we will place a priority on customer service and on improving our efficiency of timely delivery.

We have recently made a change in

the company that prints our magazine, and we are excited about the improvements we will provide you in the new year.

All of us at *Crafts Edition* would like to extend our thanks for your continued support.

We wish you and your family the happiest of holidays, and we look forward to a prosperous and exciting 1998.

Sincerely,

John C. Prebich  
Publisher